



Background

- The DaSy Center developed a guide to support Part C and Part B 619 program staff in addressing equity considerations at each stage of the data inquiry cycle.
- Data are essential to identifying disparities, tracking progress, and evaluating the effectiveness of Part C and Part B 619 programs.
- Data can also highlight the systemic barriers and root causes that prevent equitable access to programs and services.

Planning and Design for Data Collection

Overview

- Identify and prioritize the critical questions you want to answer.
- Bring together a diverse data team and partners.
- Include individuals with lived experiences.
- Identify data needed beyond Part C or Part B 619 that could be used to identify gaps and disparities in access, experiences, and outcomes.

DaSy Equity Critical Questions

- Policy and programmatic questions that help states examine equity in the provision of EI/ECSE services.
- Intended to spark discussion within the state and support the long-term goal of equitable access, services, and supports.
- Can be used with the original DaSy Critical Questions.

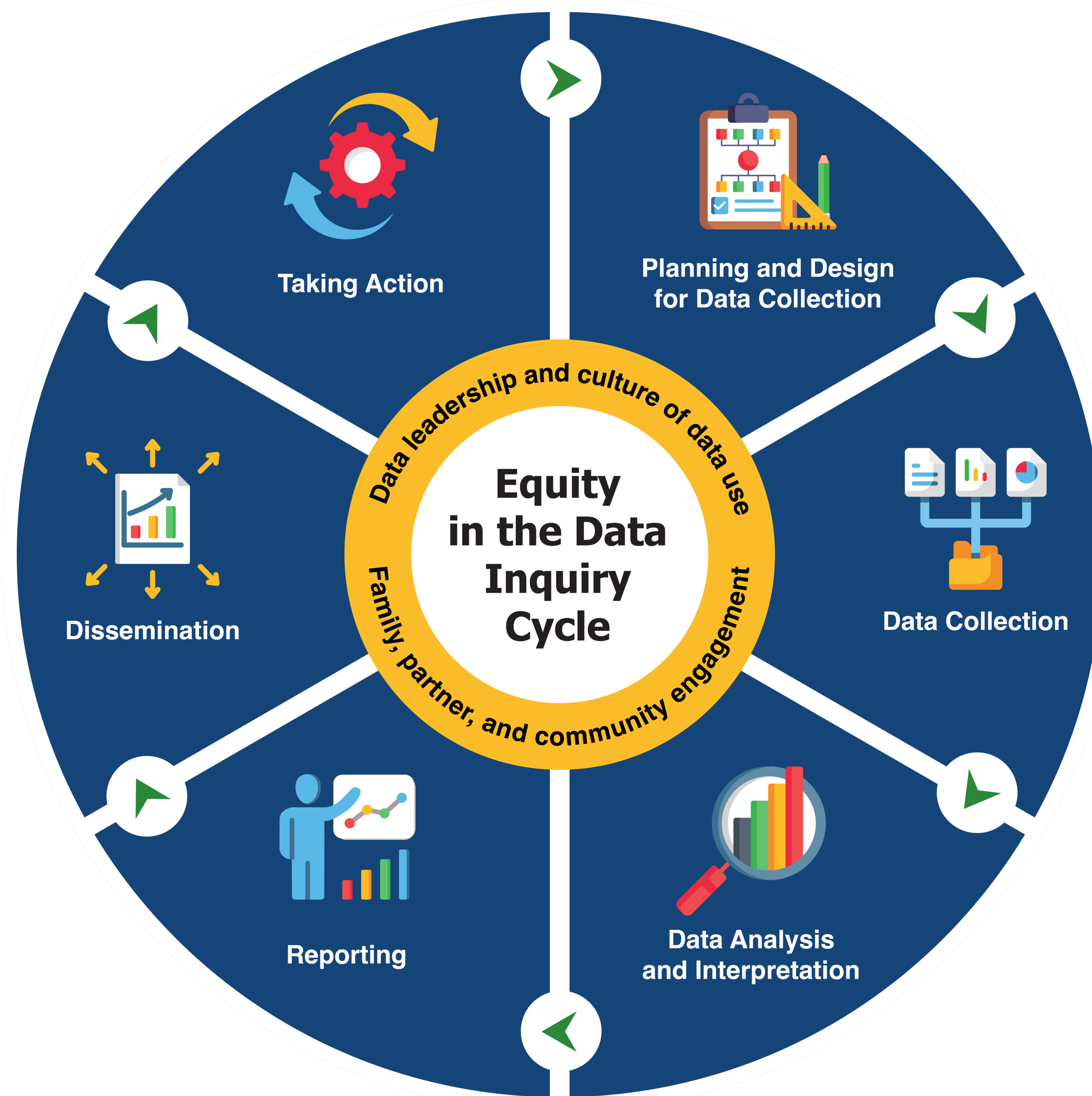


DaSy Critical Questions

Essential Conditions for Embedding Equity

Key Considerations of a Participatory Process Engage Families, Partners, and Community Members to:

- Define the purpose of the data collection.
- Define the critical questions.
- Review existing data collections.
- Determine the type of data collection and what data are needed.
- Confirm the demographic data needed (e.g., race, ethnicity, income).
- Engage those who are impacted by the data.



Embedding Equity in the Data Inquiry Cycle



Discussion and Implications

Discussion Questions

- Please discuss your own experiences with data and how you consider equity in data design, collection, and analysis.
- How have you included partners and community members in your organization's data inquiry cycle or your research projects? How did this go?
- What area(s) of the data inquiry cycle do you think could be most challenging for engagement and collaboration? Why?

What can I do next?

- Share the guide with relevant staff, partners, data analyst, and research and evaluation team.
- Reflect on current data practices and how to move toward more equitable data practices.
- Identify a state you want to focus on first.

