

*Improving Data,  
Improving Outcomes  
Virtual Convening*

October 19 - 22

2020

sponsored by:



in collaboration with:





# Role Alike Session for 619 Coordinators and Part B Data Managers

**SRI Education™**  
A DIVISION OF SRI INTERNATIONAL



IDIO Virtual Convening  
October 19, 2020

# **Change is a Given: New Requirements for Reporting Educational Environments for Preschoolers**

Debbie Cate, ECTA, DaSy  
Vera Stroup Rentier, IDC

# Agenda

- National Landscape: Preschool Educational Environments
- 618 Data Collection for Preschool Educational Environments
  - Question to Consider in the 618 Collections: 5 Year Old Preschoolers and Kindergarteners
  - SPP/APR Indicator 6
- Resources for Calculating Preschool Educational Environments
  - Interactive Application
  - Decision Tree
- SEA Data Processes Toolkit
  - Overview
  - Child Count and Educational Environments (FS 089)
  - Indicator 6. Preschool Environments

# National Landscape: Educational Environments 3-5

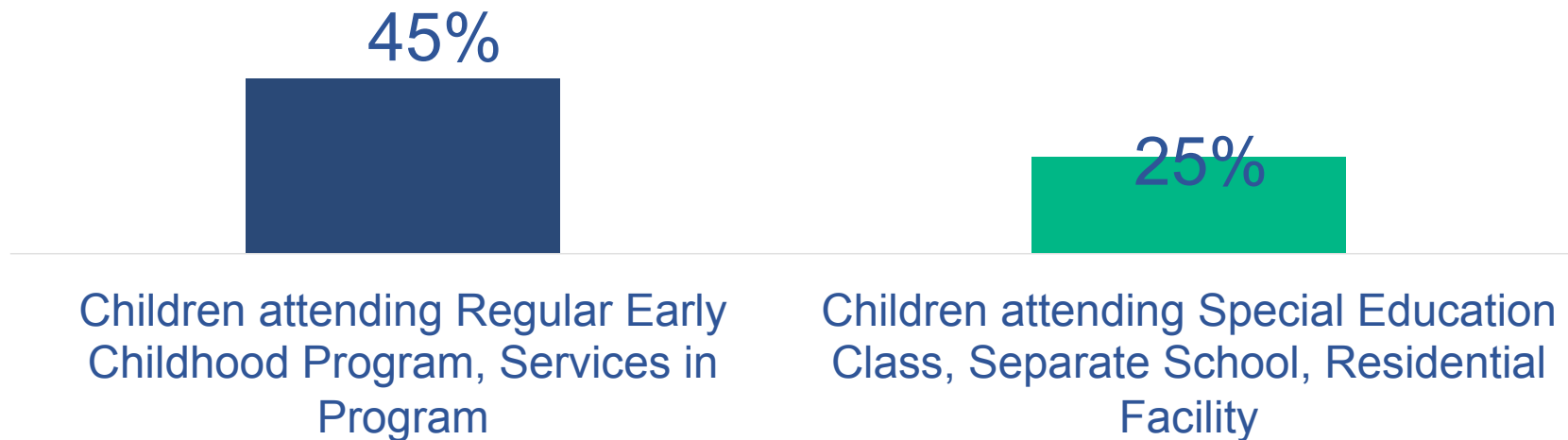
2018-19 Data



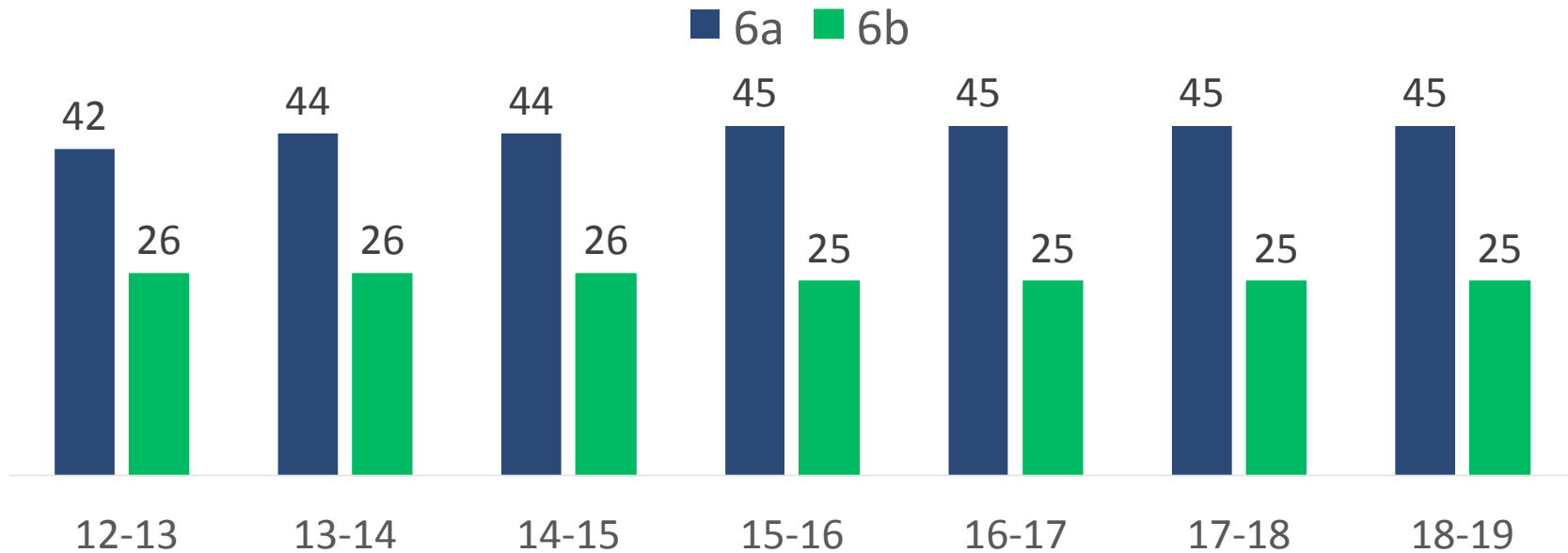
# Data Collection and Reporting Timeline

618 Data Collected	Reported to OSEP	618 Child Count and Environments	SPP/APR Indicator B6 Submitted
<b>Fall 2018</b>	<b>April 2019</b>	<b>2018- 2019</b>	<b>Feb 2020</b>
Fall 2019	April 2020	2019-2020	Feb 2021
Fall 2020	April 2021	2020-2021	Feb 2022

## Educational Environments Indicator B6 2018-19 National Data

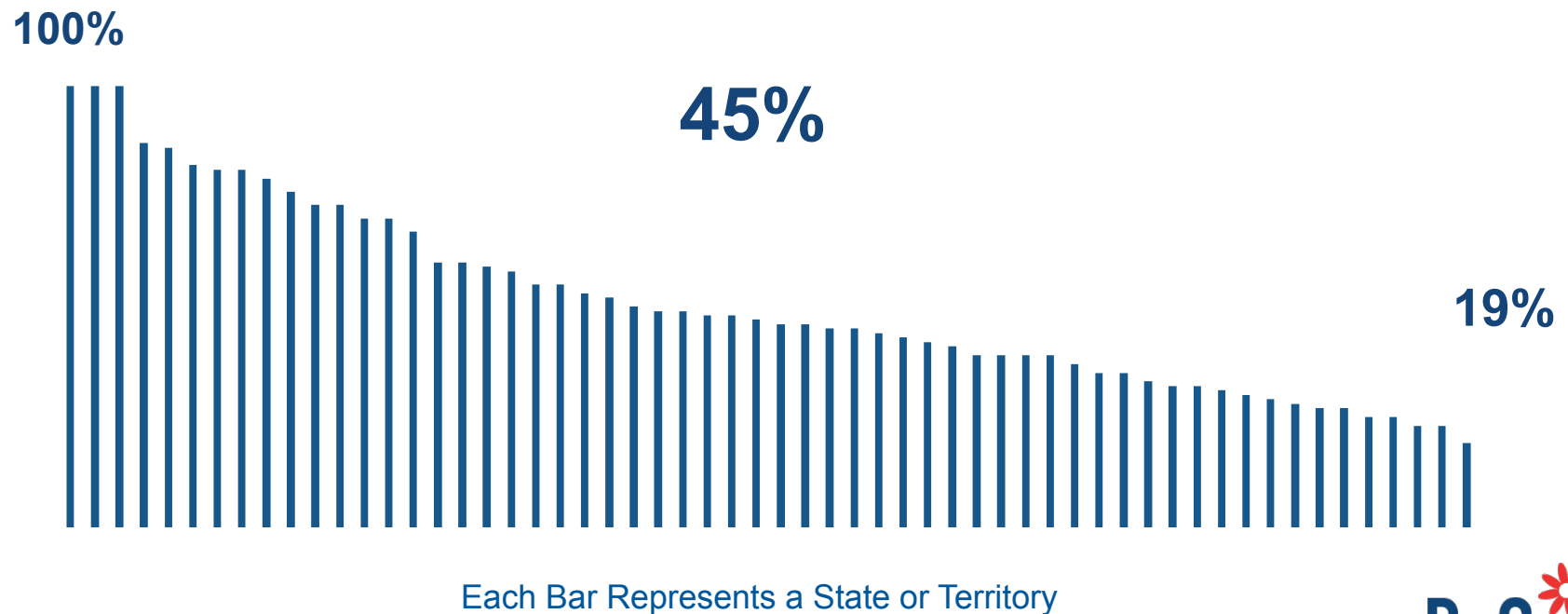


## Educational Environments Indicator 6: Percentages Over Time

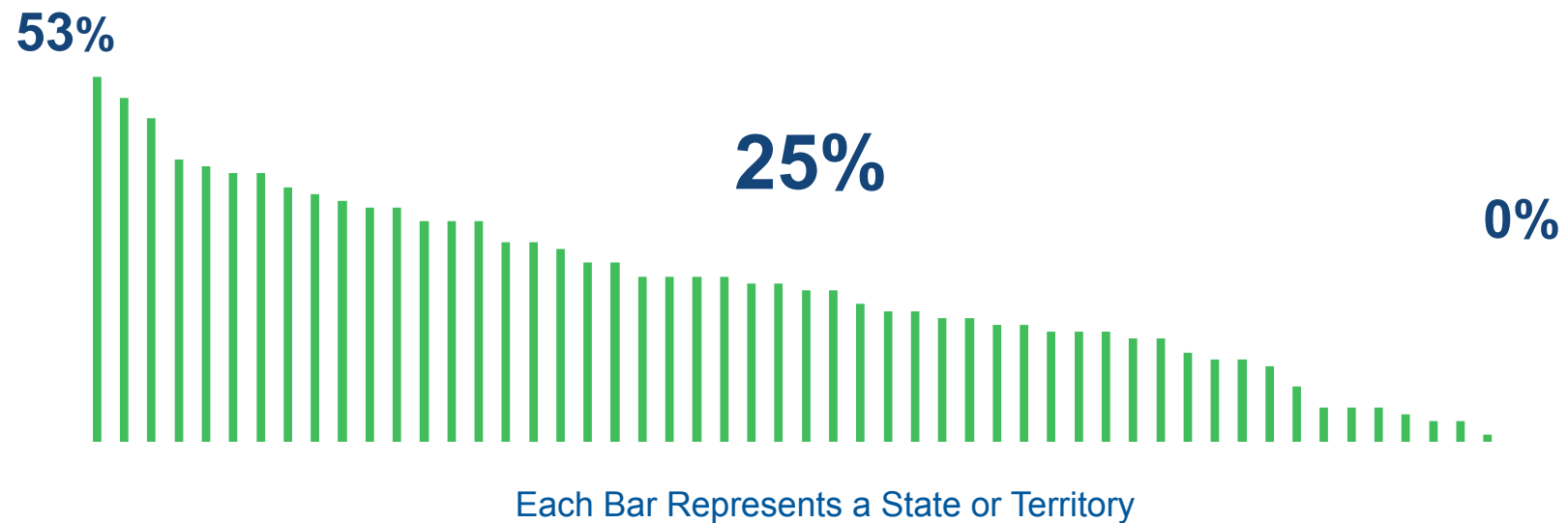




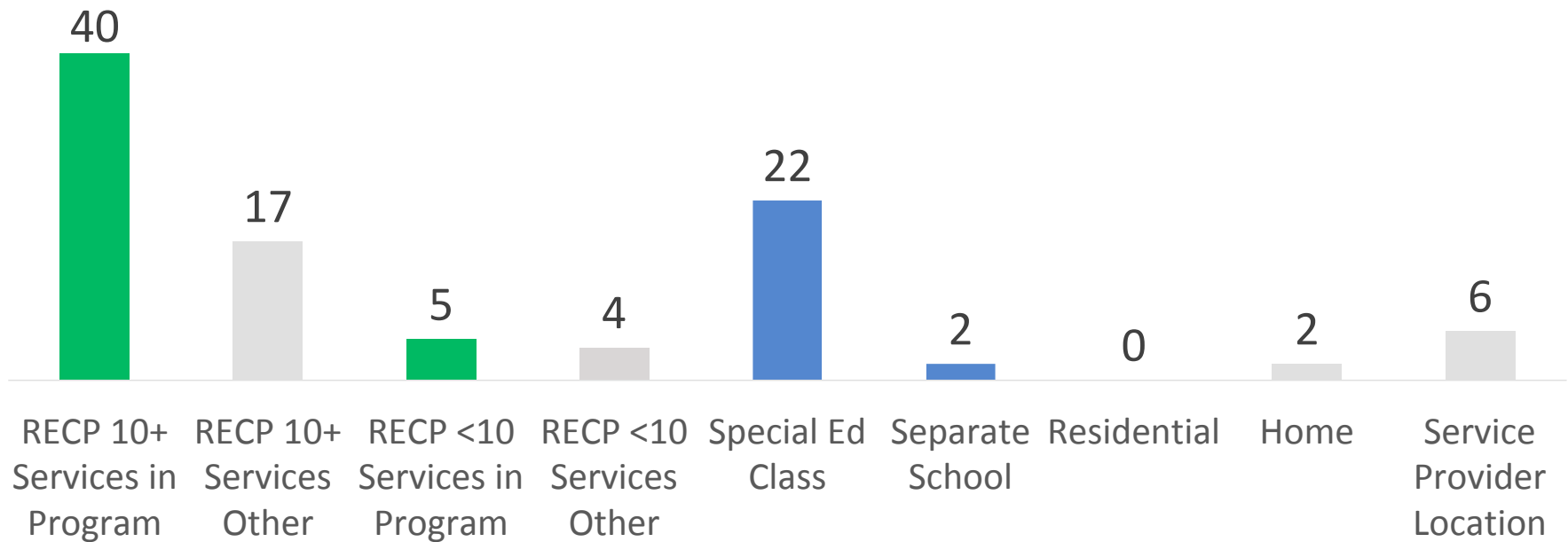
## Indicator 6A: Children 3-5 Attending and Receiving the Majority of Services in the Regular EC Program, 2018-19



## Indicator 6B: Children 3-5 Attending Special Education Class, Separate School, or Residential Facility, 2018-19



## Educational Environments: 618 Data Reporting Categories, 2018-19



# Reporting the Data 2019-20



## Data Collection and Reporting Timeline

618 Data Collected	Reported to OSEP	618 Child Count and Environments	SPP/APR Indicator B6 Submitted
Fall 2018	April 2019	2018- 2019	Feb 2020
<b>Fall 2019</b>	<b>April 2020</b>	<b>2019-2020</b>	<b>Feb 2021</b>

**Changes for reporting 5-year olds in Kindergarten are optional**

## **FS089**

# **Children with Disabilities (IDEA) Early Childhood**

---

This file reports an unduplicated count of children with disabilities receiving special education and related services

From: [IDEA Data Training Modules, April Data Collections](#)

## FS089

### Children with Disabilities (IDEA) Early Childhood

Children with disabilities are counted by:

- ☐ Settings in which they have been placed for educational services
- ☐ Disability category
- ☐ Discrete age as of the State's Child Count date
- ☐ Race or ethnicity
- ☐ Sex
- ☐ EL

From: [IDEA Data Training Modules, April Data Collections](#)

## Differences in Early Childhood (FS089) and School Age (FS002)

### Changes to the 618 Data collection – optional for last fall's collection and reporting:

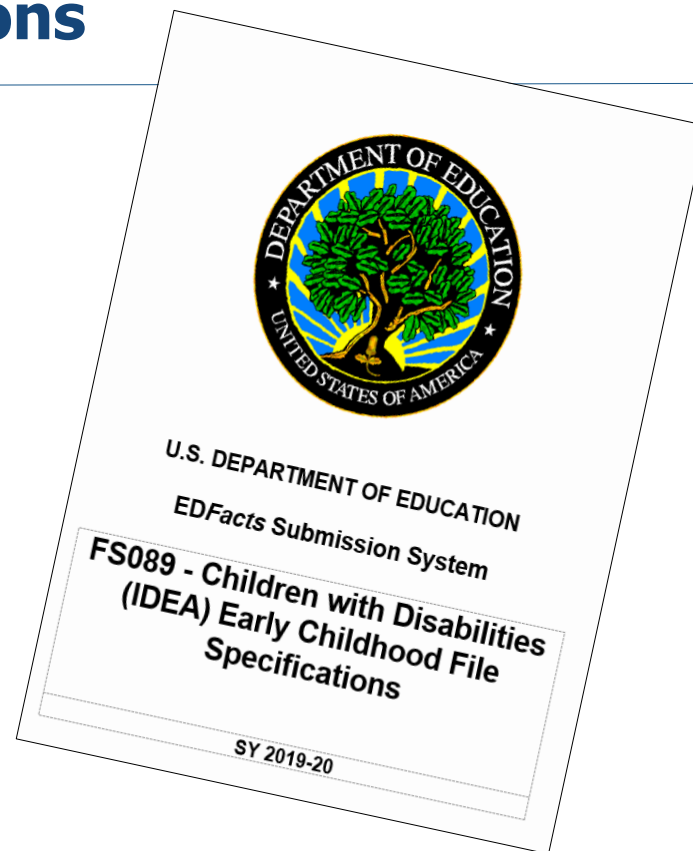
- Age ranges are different.
- Educational Environment categories are different.
- Both FS002 and FS089 must be reported at the SEA and LEA levels.
- FS002 must also be reported at the school level

From: [IDEA Data Training Modules, April Data Collections](#)



# FS089: Children with Disabilities (IDEA) Early Childhood File Specifications

618 Data Collection for  
Preschool Educational  
Environments  
2019-20



## Reporting 5-year-olds



# Reporting the Data 2020-21

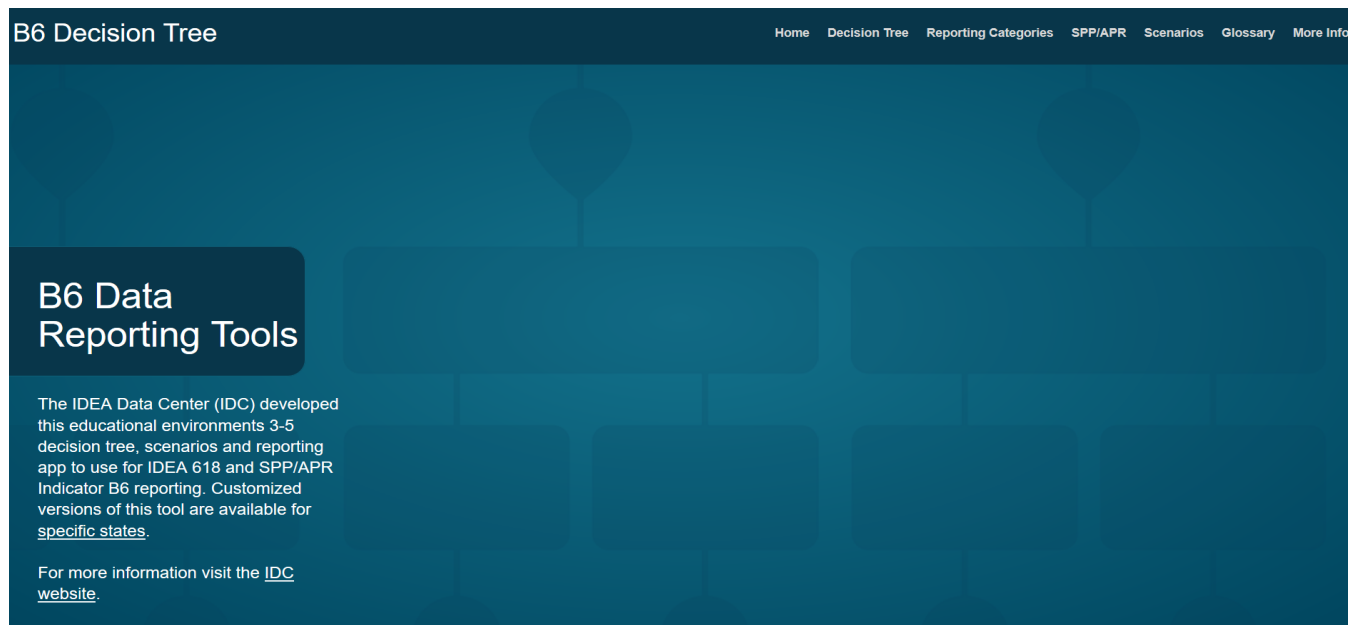


## Data Collection and Reporting Timeline

618 Data Collected	Reported to OSEP	618 Child Count and Environments	SPP/APR Indicator B6 Submitted
Fall 2018	April 2019	2018- 2019	April 2020
Fall 2019	April 2020	2019-2020	April 2021
<b>Fall 2020</b>	<b>April 2021</b>	<b>2020-2021</b>	<b>April 2022</b>

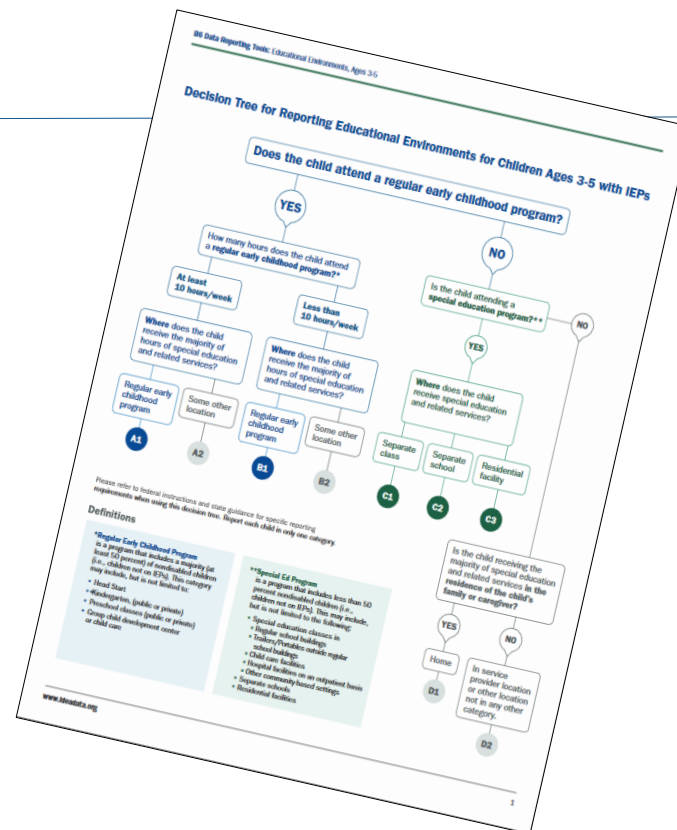
**Changes for reporting 5-year olds in Kindergarten are REQUIRED**

# Resources for Calculating Preschool Educational Environments: Interactive Application



# Resources for Calculating Preschool Environments

## Decision Tree



# SPP/APR FFY 2020 – Measurement Table

Percent of children with IEPs aged 3, 4, and aged 5 who are enrolled in a preschool program attending a:

- A. Regular early childhood program and receiving the majority of special education and related services in the regular early childhood program; and
- B. Separate special education class, separate school or residential facility.
- C. **Receiving special education and related services in the home.**

(20 U.S.C. 1416(a)(3)(A))

<p>6. Percent of children with IEPs aged 3, 4, and aged 5 who are enrolled in a preschool program attending a:</p> <p>A. Regular early childhood program and receiving the majority of special education and related services in the regular early childhood program; and</p> <p>B. Separate special education class, separate school or residential facility.</p> <p>C. Receiving special education and related services in the home.</p> <p>(20 U.S.C. 1416(a)(3)(A))</p>	<p><b>Data Source:</b></p> <p>Same data as used for reporting to the Department under section 618 of the IDEA, using the definitions in EOPSe's file specification C209.</p> <p><b>Measurement:</b></p> <p>A. Percent = [(# of children ages 3, 4, and 5 with IEPs attending a regular early childhood program and receiving the majority of special education and related services in the regular early childhood program) divided by the total # of children ages 3, 4, and 5 with IEPs] times 100.</p> <p>B. Percent = [(# of children ages 3, 4, and 5 with IEPs attending a separate special education class, separate school or residential facility) divided by the total # of children ages 3, 4, and 5 with IEPs] times 100.</p> <p>C. Percent = [(# of children ages 3, 4, and 5 with IEPs receiving special education and related services in the home) divided by the total # of children ages 3, 4, and 5 with IEPs] times 100.</p>	<p>Sampling from the State's 618 data is not allowed.</p> <p>States must report five-year-old children with disabilities who are enrolled in preschool programs in this indicator. Five-year-old children with disabilities who are enrolled in kindergarten are included in Indicator 5.</p> <p>States may choose to set one target that is inclusive of children ages 3, 4, and 5, or set individual targets for each age.</p> <p>Describe the results of the calculations and compare the results to the target.</p> <p>If the data reported in this indicator are not the same as the State's data reported under IDEA section 618, explain.</p>
---	--	--

## Home Environments for Preschool

- Home is a separate educational environments reporting category for preschoolers. It is not the same as the homebound/hospital category for children who are school age.

- In the

[Dear Colleague Letter on Least Restrictive Environments for children ages 3-5](#) OSEP

notes:

*An LEA may provide special education and related services to a preschool child with a disability in a variety of settings, including a regular kindergarten class, public or private preschool program, community-based child care facility, or in the child's home.*



## Providing IDEA Services to Preschool Age Children

While the number of public pre-kindergarten programs has increased, many LEAs do not offer, or offer only a limited range of, public preschool programs, particularly for three-year-olds. In these situations, the LEA must explore alternative methods to ensure that the LRE requirements are met for each preschool child with a disability. These methods may include:

- (1) providing opportunities in programs such as Head Start or community-based child care);
- (2) enrolling preschool children with disabilities in private preschool programs for nondisabled preschool children;
- (3) locating classes for preschoolers with disabilities in regular elementary schools; or
- (4) **providing home-based services.**

# SPP/APR for FFY 2020 - Targets

States may choose to set one target that is inclusive of children ages 3, 4, and 5, or set individual targets for each age.

<p>6. Percent of children with IEPs aged 3, 4, and aged 5 who are enrolled in a preschool program attending a:</p> <p>A. Regular early childhood program and receiving the majority of special education and related services in the regular early childhood program; and</p> <p>B. Separate special education class, separate school or residential facility.</p> <p>C. Receiving special education and related services in the home.</p> <p>(20 U.S.C. 1415(a)(3)(A))</p>	<p><b>Data Source:</b></p> <p>Same data as used for reporting to the Department under section 618 of the IDEA, using the definitions in EOPSe's file specification 0209.</p> <p><b>Measurement:</b></p> <p>A. Percent = <math>\left[ \frac{\# \text{ of children ages 3, 4, and 5 with IEPs attending a regular early childhood program and receiving the majority of special education and related services in the regular early childhood program}}{\text{total } \# \text{ of children ages 3, 4, and 5 with IEPs}} \right] \times 100</math>.</p> <p>B. Percent = <math>\left[ \frac{\# \text{ of children ages 3, 4, and 5 with IEPs attending a separate special education class, separate school or residential facility}}{\text{total } \# \text{ of children ages 3, 4, and 5 with IEPs}} \right] \times 100</math>.</p> <p>C. Percent = <math>\left[ \frac{\# \text{ of children ages 3, 4, and 5 with IEPs receiving special education and related services in the home}}{\text{total } \# \text{ of children ages 3, 4, and 5 with IEPs}} \right] \times 100</math>.</p>	<p>Sampling from the State's 618 data is not allowed.</p> <p>States must report five-year-old children with disabilities who are enrolled in preschool programs in this indicator. Five-year-old children with disabilities who are enrolled in kindergarten are included in Indicator 5.</p> <p>States may choose to set one target that is inclusive of children ages 3, 4, and 5, or set individual targets for each age.</p> <p>Describe the results of the calculations and compare the results to the target.</p> <p>If the data reported in this indicator are not the same as the State's data reported under IDEA section 618, explain.</p>
---	--	--

# SEA Data Processes Toolkit



## Overview

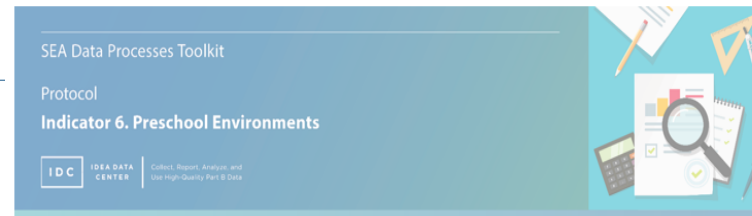
<https://www.ideadata.org/sites/default/files/media/documents/2020-02/StateDataProcessesToolkit-Overview.pdf>

# SEA Data Processes Toolkit

## Indicator 6

### Preschool Environments Child Count and Educational Environments (FS089)

<https://www.ideadata.org/sea-data-processes-toolkit>



#### Essential Elements

Indicator Description:
Percent of children aged 3 through 5 with IEPs attending a:
6A. regular early childhood program and receiving the majority of special education and related services in the regular early childhood program; and
6B. separate special education class, separate school, or residential facility.
Measurement: <sup>1</sup>
6A. Percent = [(# of children aged 3 through 5 with IEPs attending a regular early childhood program and receiving the majority of special education and related services in the regular early childhood program) divided by the (total # of children aged 3 through 5 with IEPs)] times 100.
6B. Percent = [(# of children aged 3 through 5 with IEPs attending a separate special education class, separate school, or residential facility) divided by the (total # of children aged 3 through 5 with IEPs)] times 100.

# Thank you

Visit us at <http://dasycenter.org/>

Follow us on Twitter: [@DaSyCenter](https://twitter.com/DaSyCenter)



The contents of this presentation were developed under a grant from the U.S. Department of Education, #H373Z190002. The contents and resources do not necessarily represent the policy of the U.S. Department of Education, and you should not assume endorsement by the Federal Government. Project Officers: Meredith Miceli and Amy Bae.