

*Improving Data,
Improving Outcomes
Virtual Convening*

October 19 - 22
2020

sponsored by:



in collaboration with:



WELCOME FROM THE CENTER FOR IDEA EARLY CHILDHOOD DATA SYSTEMS (DaSy)!!



Kathy Hebbeler
Co-Director



Donna Spiker
Co-Director



Grace Kelley
Deputy Director



Cornelia Taylor
Deputy Director

WELCOME FROM THE EARLY CHILDHOOD TECHNICAL ASSISTANCE CENTER (ECTA)!



Christina Kasprzak
Co-Director



Megan Vinh
Co-Director

WELCOME FROM THE EARLY CHILDHOOD PERSONNEL CENTER (ECPC)!



Mary Beth Bruder
Director



Darla Gundler
Assistant Director

WELCOME FROM THE NATIONAL CENTER FOR PYRAMID MODEL INNOVATIONS!



Lise Fox
Principal Investigator,
University of South Florida



Mary Louise Hemmeter
Co-Principal Investigator,
Vanderbilt University



Phillip Strain
Co-Principal Investigator,
University of Denver



Barbara J. Smith
Co-Principal Investigator,
University of Denver

WELCOME TO ALL 305 OF YOU!

- 48 Part C Coordinators
- 43 Part C Data Managers
- 40 Part B 619 Coordinators
- 31 Part B Data Managers
- 22 Parent Leaders
- 33 Other state staff
- 14 OSEP staff
- 74 TA Providers



THINGS TO KNOW TO GET US STARTED...

- We have Resources in your Registration app, including a page with acronyms, information about the TA Centers, a PDF of the detailed agenda.
- We will ask you to give us feedback on sessions.
 - You'll have links to a few evaluation questions for sessions in the event platform.
 - You'll get an evaluation survey after the convening ends on Thursday.
- OSEP will be answering questions in the Closing Plenary, submitted during registration and throughout the convening this week.
 - You can submit questions in the event platform.
- Use this hashtag to post about IDIO on social media: #DaSyIDIO2020.

DATA LEADERSHIP IN THE TIME OF COVID

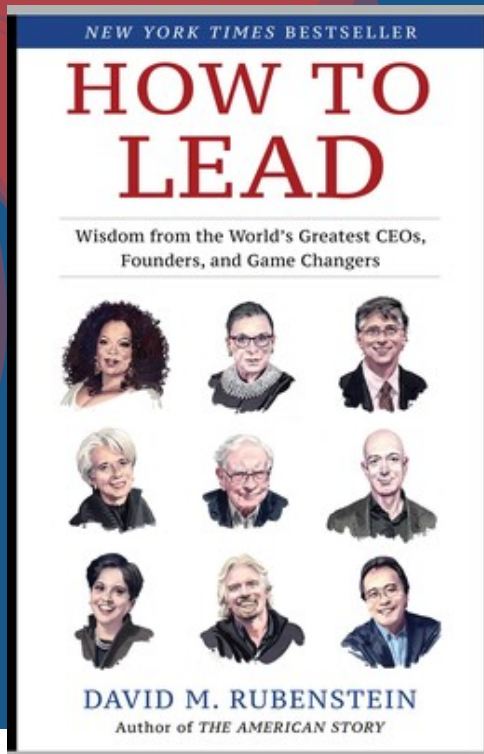
- Participants will increase knowledge and skills related to:
 - the collection, analysis, and use of data to support children and families, including during disruptions such as COVID-19, and
 - building the organizational capacity to support the implementation of evidence-based practices, including during disruptions such as COVID-19.



BROUGHT TO YOU BY THE LETTERS
AND ALL THE NUMBERS...

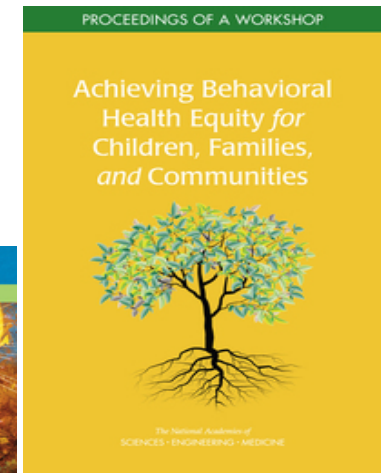
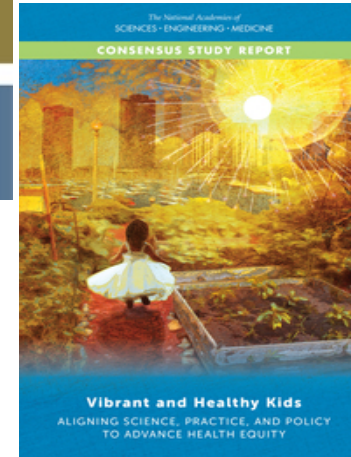
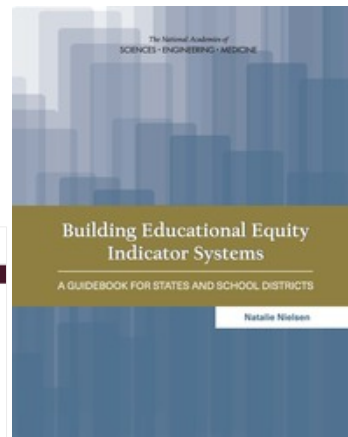
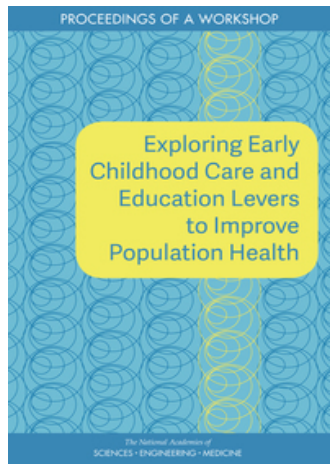


YOU ARE LEADERS!



- What does it take?
 - Have a focus
 - Communicate well
 - Know your priorities
 - Rise to the occasion
 - Have humility
 - Deal with failure by being persistent
 - Have ability to keep learning
- Effective leaders get others to follow because they have a **vision** that is:
 - useful to others, and
 - is good for all of us.

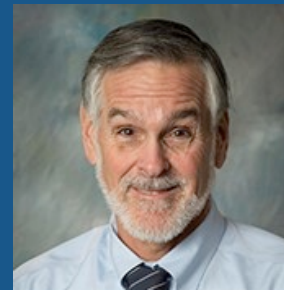
EQUITY & DATA: REPORTS FROM THE NATIONAL ACADEMIES OF SCIENCES, ENGINEERING, AND MEDICINE



WELCOME FROM THE OFFICE OF SPECIAL EDUCATION PROGRAMS (OSEP)!



Meredith Miceli
DaSy Project
Officer



Larry Wexler
Division Director,
OSEP Research to
Practice Division



David Cantrell
OSEP Deputy
Director

OFFICE OF SPECIAL EDUCATION AND REHABILITATIVE SERVICES (OSERS)

LARRY WEXLER, DIRECTOR, OFFICE OF SPECIAL
EDUCATION PROGRAMS (OSEP), RESEARCH TO
PRACTICE (RTP)



OSEP Fast Facts

- The purpose of the OSEP Fast Facts is to share and promote our 618 Individuals with Disabilities Education Act (IDEA) data.
- OSEP Fast Facts pulls together data from the 12 data collections authorized under IDEA Section 618 into graphic visual representations with the intent to present 618 data quickly and clearly.
- Data presented includes that collected through child count, educational environments, discipline, and exiting data collections.



OSEP Fast Facts

OSEP will post future Fast Facts to the OSEP Fast Facts page at:

<https://sites.ed.gov/idea/osep-fast-facts/>

If you have any questions or feedback on the Fast Facts, please contact OSEP at osepIDEAdata@ed.gov



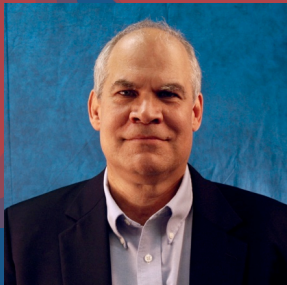
The U.S. Department of Education [collects data](#) from states about infants, toddlers, children and youth with disabilities who receive early intervention services, special education or related services under the Individuals with Disabilities Education Act (IDEA).

The Office of Special Education Program's Fast Facts summarizes key facts related to specific aspects of the [data collection authorized by Section 618 of the IDEA](#). Data presented includes that collected through child count, educational environments and settings, discipline and exiting data collections.

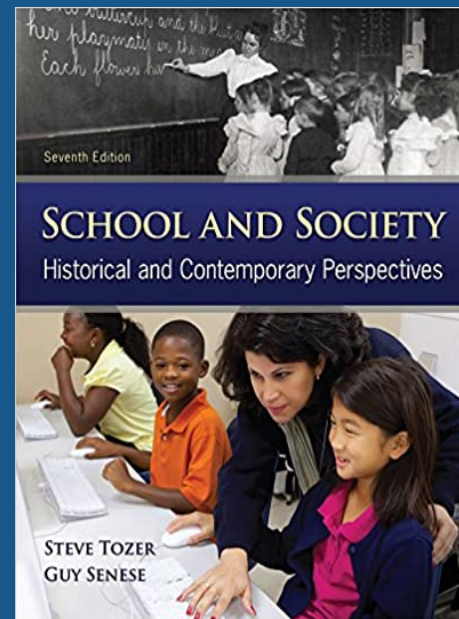
- [OSEP Fast Facts: Black or African American Children With Disabilities](#) (August 2020)
- [OSEP Fast Facts: American Indian or Alaska Native Children With Disabilities](#) (August 2020)
- [OSEP Fast Facts: Infants and Toddlers With Disabilities](#) (June 2020)
- [OSEP Fast Facts: Children Identified With Emotional Disturbance](#) (May 2020)
- [OSEP Fast Facts: Children Identified With Autism](#) (March 2020)

If you have any questions or feedback on the Fast Facts, please contact OSEP at osepIDEAdata@ed.gov.

KEYNOTE: INFORMATION AND INQUIRY IN LEADERSHIP FOR EQUITY: WHY DATA SYSTEMS MATTER



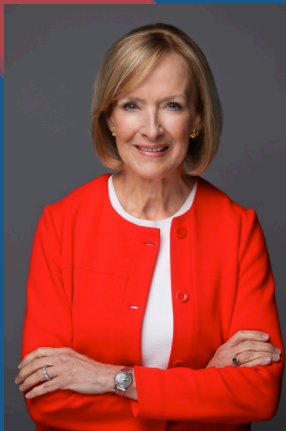
Steve Tozer, Ph.D.
University of Illinois Chicago
Professor Emeritus



THANKS TO STEVE FOR HIS OPENING KEYNOTE TALK!



KEYNOTE: A MOTHER'S VIEW: MY EXPERIENCE RAISING A SON WITH SPECIAL EDUCATION NEEDS



Judy Woodruff

PBS NewsHour Anchor and
Managing Editor

THANKS TO JUDY FOR HER OPENING KEYNOTE TALK!



SEE YOU LATER TODAY IN ROLE-ALIKE SESSIONS



- This afternoon, we have 4 role-alike sessions.
- Tomorrow and Wednesday, we have two blocks of 6 concurrent sessions.
- Many of the concurrent sessions will have breakout rooms for discussion.
 - TA providers may be in your breakout; they are there to listen.
- We will set Zoom to mute, except when we are taking questions and interacting.
- We are recording all sessions to post on the DaSy website after the meeting; we are not recording the breakout sessions.

HOUSEKEEPING...

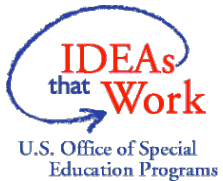




Thank you

Visit us at <http://dasycenter.org/>

Follow us on Twitter: [@DaSyCenter](https://twitter.com/DaSyCenter)



The contents of this presentation were developed under a grant from the U.S. Department of Education, #H373Z190002. The contents and resources do not necessarily represent the policy of the U.S. Department of Education, and you should not assume endorsement by the Federal Government. Project Officers: Meredith Miceli and Amy Bae.