

*Improving Data,  
Improving Outcomes  
Virtual Convening*

October 19 - 22

2020

sponsored by:



in collaboration with:



# State Systemic Improvement Plans (SSIP): Where Do We Go From Here?

Anne Lucas, Margaret Gillis,  
Robin Nelson, Ginger Elliott-Teague, &  
Jenna Nguyen



IDIO Virtual Convening  
October 19-22, 2020

# Welcome and Introductions

---

Anne Lucas, ECTA/DaSy

Margaret Gillis, DaSy

Robin Nelson, DaSy

Ginger Elliott-Teague, Oklahoma State Department of Education

Jenna Nguyen, ECTA/DaSy

- Purpose of the Session

To share a process for reflecting on and assessing the SSIP to help inform data-based future directions



# Getting to Know You

Poll: What is your role? (check all that apply)

- Part C or 619 Coordinator
  - Part C or Part B Data Manager
  - Other Part C or 619 state staff
  - Part C or 619 TA provider
  - National TA provider
  - ICC or State Advisory Panel member
  - Local provider/teacher or administrator
  - Parent
  - OSEP staff
  - Other (specify in chat)
  - Getting to Know You (2)
- Poll: What changes are you considering making to your SSIP?
- SiMR
  - Theory of Action and/or Logic Model
  - Evidence-based practices
  - Activities to support implementation of evidence-based practices
  - Infrastructure activities (specify which component in the Chat box)
  - Not sure of the changes we are considering
  - Not considering making changes



# Getting to Know You (3)

Poll: Why are you considering making changes to your SSIP? (check all that apply)

- We aren't seeing the results we would like to see
- Difficulty evaluating implementation of EBPs
- Difficulty getting practitioners to fidelity on EBPs
- Difficulty with practitioners maintaining fidelity on EBPs
- To strengthen infrastructure to support improvement activities
- To address sustainability and/or scale up
- We have achieved the goals of the initial SSIP
- State priorities have changed
- Other (specify in the chat box)

- Reflecting on Your SSIP

## **Why reflect on the SSIP?**

- To take stock of how far we have come
- To identify intended and unintended outcomes
- To consider which activities should be discontinued, modified, scaled up, or sustained

## **Who to involve in the reflection process?**

- State agency staff
- Local program staff
- Family stakeholders
- Stakeholders from partner agencies and organizations

# What was the desired result of the SSIP, and are we achieving that result?

- Considerations
  - Have we achieved our SiMR and sustained our SiMR once achieved?
  - Have we achieved milestones we had hoped to achieve by this time?
  - Are we making progress towards our SiMR?
- Data to examine
  - Child outcomes data related to the SiMR
    - Overall, by program, by progress category
  - Family outcomes data
  - Outputs and outcomes achieved



## How have catastrophic events or natural disasters impacted our SSIP (e.g., COVID-19, hurricane, wildfire, earthquake)?

- Considerations
  - Have events impacted our momentum?
  - How has capacity to carry out SSIP activities been impacted at the state and/or local program/district level?
  - Have events impacted our priorities?
  - Have events caused data disruptions?
- Data to examine
  - Projected timelines and outputs/outcomes achieved
  - Qualitative data from local programs/districts



# What have we learned from our infrastructure improvements that can inform our future directions?

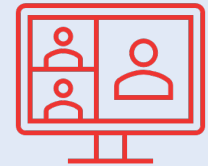
- Considerations
  - What has helped us get where we are, and will it help us with scale up and sustainability?
  - What barriers did we experience in implementation, and what have we learned from them?
- Data to examine
  - Implementation plan
  - Qualitative data from stakeholders, including local programs and districts





# What have we learned and how can we use what we learned to inform changes to our implementation of evidence-based practices?

- Considerations
  - What have we learned about supporting the implementation of EBPs?
    - Efforts to achieve fidelity of their use? To maintain fidelity?
    - Are the EBPs a good fit for your local programs?
  - Are our practices clearly intended to impact the SiMR? Are there other practices that might have a more direct impact on the SiMR?
- Data to examine
  - Data on implementation of EBPs
  - Data on activities to support use of EBPs
  - Qualitative data from stakeholders and local programs/districts



## Activity - Sticky Wall



## SSIP Results

What SSIP milestones did your state expect to achieve by this point in time? +

evidence- based practices would be implemented at fidelity by most practitioners + 8	Master Cadre of Practice-based Coaches and Process Coaches + 0
That all of our providers would be coaching with fidelity + 3	Expected greater impact on the SIMR by now + 7
We knew it would take a while to get a significant number of practitioners trained but we are there! + 0	Scale up to at least 6-8 of 15 local programs implementing + 0
Implementation of the EI Model and Recommended Practices statewide + 1	More consensus on EBP between local programs and state expectations + 1
We had to completely redesign our system - all new system of payment and and a statewide RFP which eliminated 8 programs then COVID hit + 0	With remote EI depending on Coaching we don't have enough fidelity coaches to train master/mentor coaches; never thought that would happen + 0


What are current challenges to making progress toward your SIMR? Have you found effective strategies in addressing these barriers? +

not enough time! + 7	High turnover in staff and coaches + 9
People are having trouble focusing on items outside of those related to the pandemic + 6	Lack of buy-in by providers and staff + 5
limited personnel capacity to monitor evidence-based practices by practitioners + 6	Referral sources still don't get it!! + 2
Successful efforts to improve data quality have resulted in SIMR decreases + 4	We didn't have a clear picture of "readiness" so programs are struggling with key policy or infrastructure elements that should have been ad + 0
Delay in scale-up activities due to COVID + 5	Delayed in implementing the COS process with fidelity - training happed but with COVID observations haven't occurred + 0
Need buy-in at higher levels than originally anticipated + 2	Costs associated with peer coaching. We have applied for and received some local grants to assist with this. + 0
We have begun sustained fidelity reviews, but limited staff have impacted out ability to increase this activity. + 1	Costs and now due to COVID we are looking at severe budget cuts + 1


What next steps are you planning to review your data to assess progress towards intended SSIP results? +

We want to link our PD and Quality Practice Self Assessment (QPSA) data to child and family outcome data. + 0	Plan to reconvene our large stakeholder group to assess where we are and ongoing priorities + 9
We will be linking our data between providers and child outcomes to better analyze impact of EBP and training. + 4	Diversity in ICC membership and committees + 3
Review 4 years of data in categories and pre post trainings + 1	New fidelity checklists for providers and administrators from which data will be collected up to state level + 3
Intentional plan to engage more parents + 4	Re-designing our readiness process to better engage key administrators and ensure programs fully understand what implementation involves + 1
Figure out how to promote this so referral sources will stop referring for OT PT and SLP + 0	


## SSIP Results – Day 2

What SSIP milestones did your state expect to achieve by this point in time? 

Evidence-based practices would be implemented at fidelity by most practitioners + 1	Made progress but not as much as predicted + 0
Full infrastructure implementation and scale-up + 0	More scale-up + 1

What are current challenges to making progress toward your SiMR? Have you found effective strategies in addressing these barriers? 

provider shortages + 2	Impact of COVID-19 on sustaining SSIP + 3
We need new contracts to have some teeth in our contract on expectations of providers + 1	Many changes at once, impact hard to verify + 1

What next steps are you planning to review your data to assess progress towards intended SSIP results? 

Intentional plan to engage more parents + 2	Engaging parents and providers to get additional feedback + 0
building data literacy with providers so we can have robust, in depth convos + 0	

## SSIP Disruption

What has been the biggest disruption to your SSIP this year? +

COVID!	Changes in leadership at state level.
+11	+1
Staff changes at the state level	state budget holdbacks and COVID
+3	+1
Required SPP/APR extension...hoped to make additional changes earlier	Since this year is an extension of the previous APR, our activities only went through last year, so we really weren't sure how to proceed
+0	+12
Disruption in contracting for trainings	COVID pulled our time away from SSIP to develop Remote EI rules and payments and EIS Over 3 over the summer when LEAs were closed
+0	+2
There will be disruption in child outcome data. We are looking at data now to analyze the extent of this.	Inability to implement fidelity assessments virtually
+3	+1
Program closures	We have a family outcome and rely on our family survey data - the surveys were supposed to be handed out in person in March-April.
+0	+0

What strategies have been effective in dealing with these SSIP disruptions? +

Train more Mentor / Master coaches	Observation can be done virtually without the need for statewide travel
+1	+3
Scale Up on some SSIP Activities	Have moved all training to online platform.
+2	+3
We have tried to use COVID and shift to telehealth as an opportunity to advance use of evidence-based practices we're targeting	Switch to telehealth has required more of a commitment to coaching and family engagement
+2	+8
Adjusted practitioner coaching to focus on supporting wellness and mitigate trauma	We have 8 fewer programs (from 27 to 19) which is more efficient
+1	+0
Successful communication with Part B to ensure reconciliations are complete and timely	Created a Leadership Team Cohort to create a space for team leaders to discuss challenges and share ideas to address COVID impacts
+1	+1
Implementation workgroups revisiting the plan and proposing changes to activities and evaluation	
+0	

What next steps are you planning to review data related to SSIP disruptions? +

Create a way to track the movement of individuals through our PD system to measure retention	Added some questions about impact of COVID to our annual survey of all providers on their use of evidence-based practices
+1	+1
We really need to take a look at how it has been impacted. Have not made time to do that yet	Examine extent to which implementation of fidelity assessments was impacted
+1	+4
Examine changes in reported coaching time and activities to better support coaches and practitioners through COVID	We are planning to survey providers to see where they are in implementation, and to determine PD needs
+0	+0
Survey providers and families	
+1	

## SSIP Disruption - Day 2

What has been the biggest disruption to your SSIP this year? +

COVID 19 + 1	availability of resources- internet access, laptops, etc + 1
Families on hold, not able to complete outcomes due to the length of time COVID continued + 1	Staff being deployed to respond to COVID. + 1

What strategies have been effective in dealing with these SSIP disruptions? +

Reimbursement to be able to provide telehealth services to families + 0	LOTS of ongoing conversation with providers about best practice + 0
--	--

What next steps are you planning to review data related to SSIP disruptions? +

Comparing service delivery via telehealth vs in person. + 1	building space to talk this into our annual determination meeting where the field can use their data to make the best next steps + 0
---	---

# Oklahoma's SSIP Reflection

- Complete overhaul is expected
- Original SiMR: emerging literacy (knowledge and skills ECO)
- Reflection:
  - SiMR goal was achieved in the first year
  - Infrastructure strategies were implemented very successfully, but peripheral to SiMR
  - EBPs were not identified well at the beginning
  - Strategies involving parents were difficult to implement
  - Some intermediate objectives and outcomes were difficult to measure



**OKLAHOMA**  
Education

ecta DaSy

# What are our next steps for systemic work to improve outcomes for infants, toddlers, and children with disabilities? Who needs to be involved?

What activities should we scale up?

What activities should we discontinue?

What activities should we modify?

What additional data do we need (to collect or analyze)?

Who should be involved in these decisions?

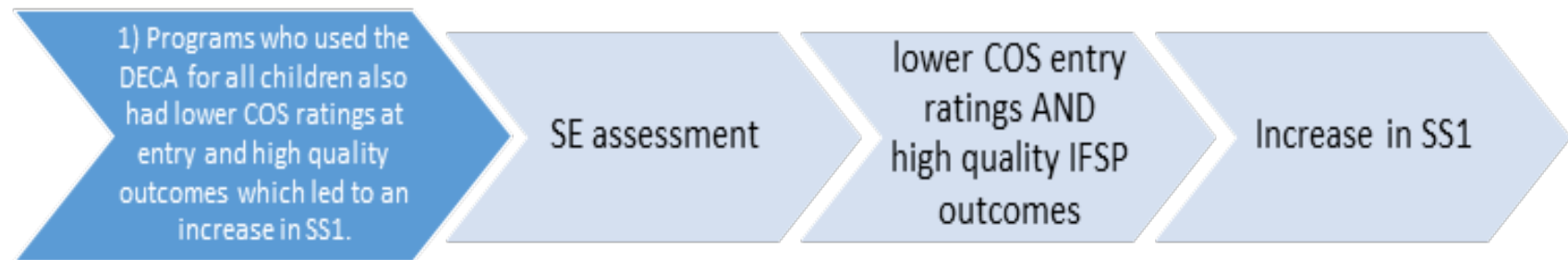




# Washington's SSIP Reflection to Guide Scale Up Plans

- Looking at data collected from implementation sites to determine which SSIP activities:
  - Had the most impact on the SSIP outcomes and SIMR
  - Should be continued in scaling up the SSIP statewide
- Example Questions:
  - Should we continue the following when scaling up?
    - Training on and requiring the use of the DECA to assess children's SE need
    - Supporting agency use and analyses of COS data
    - The use of the HOVRS to evaluate implementation of provider SE practices as embedded in Promoting First Relationships (WA's evidence-based practice)

# Washington's Hypothesis on Use of DECA



# Sticky Wall Activity

What are our next steps for systemic work to improve outcomes for infants, toddlers, and children with disabilities?

Who needs to be involved?



## SSIP Action Planning

### Keep doing/More of +

Paying programs for Remote EI + 0	Continue training direct service providers on the EBP + 5	Scale up of COS and family engagement PD opportunities + 0
Video-based coaching + 2	Increase buy-in from staff and families Involving stakeholders + 3	Engaging stakeholders every step of the way + 2
Building up peer coaching cadre + 1	Maintaining telehealth as a service delivery option beyond COVID + 4	Paying providers a small fee to participate in training + 0

### Stop doing/Less of +

Quit messing with infrastructure! + 1	Less monitoring of programs that are demonstrating EBP (move from monthly to quarterly) + 0
--	--

### Start doing +

Linking QPSA data to Family Outcome data. + 0	Survey Families + 3	I liked a prior suggestion of survey for providers on EBP + 2
Assessing use of EBPs by interventionists + 0	Implement consistent practice-based coaching + 0	Fidelity checklists at both provider and administrator level + 1

### Action items +

Revise permanent (non COVID PHE) Remote EI procedure + 0	Assess impact of pandemic on progress + 1	Check with pilot sites on what has been most effective and should be a priority for scale up + 1
Do a data and infrastructure analysis similar to what we did in Phase I to see where our current system strengths are + 1	Plan and implement a series of reflection sessions for a broad array of stakeholders and partners to prepare for next SSIP cycle + 0	

## SSIP Action Planning – Day 2

### Keep doing/More of +

Gathering in  + 0	keep regularly looking at data on an ongoing basis  + 3
Gathering data to see intermittent progress towards our SiMR  + 0	More stakeholder input  + 0
cleaning data and talking about it to build literacy and have the opportunity for more in depth convos  + 0	Kepp scaling up and implementing EBPs  + 1

### Start doing +

trying to figure out which strategies should be scaled up and which should be scaled back  + 1	Fidelity of Evidence Based Practice  + 0
--	--

### Stop doing/Less of +

### Action items +

Get leadership- both state and in the field to have more of a buy in  + 2	need to find the time and build up more capacity to accomplish everything  + 0
---	--

# Wrap Up

Handout – SSIP: Where Do We Go From Here?  
Reflection Questions

TA is available! Reach out to your liasion or TA providers to make a request.

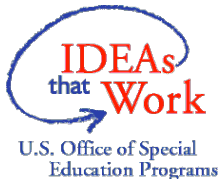
Please complete the session evaluation



# Thank you

Visit us at <http://dasycenter.org/> and <http://ectacenter.org>

Follow us on Twitter: [@DaSyCenter](https://twitter.com/DaSyCenter) and [@ECTACenter](https://twitter.com/ECTACenter)



The contents of this tool and guidance were developed under grants from the U.S. Department of Education, #H373Z190002 and #H326P170001. However, those contents do not necessarily represent the policy of the U.S. Department of Education, and you should not assume endorsement by the Federal Government. Project Officers: Meredith Miceli, Amy Bae, and Julia Martin Eile.