



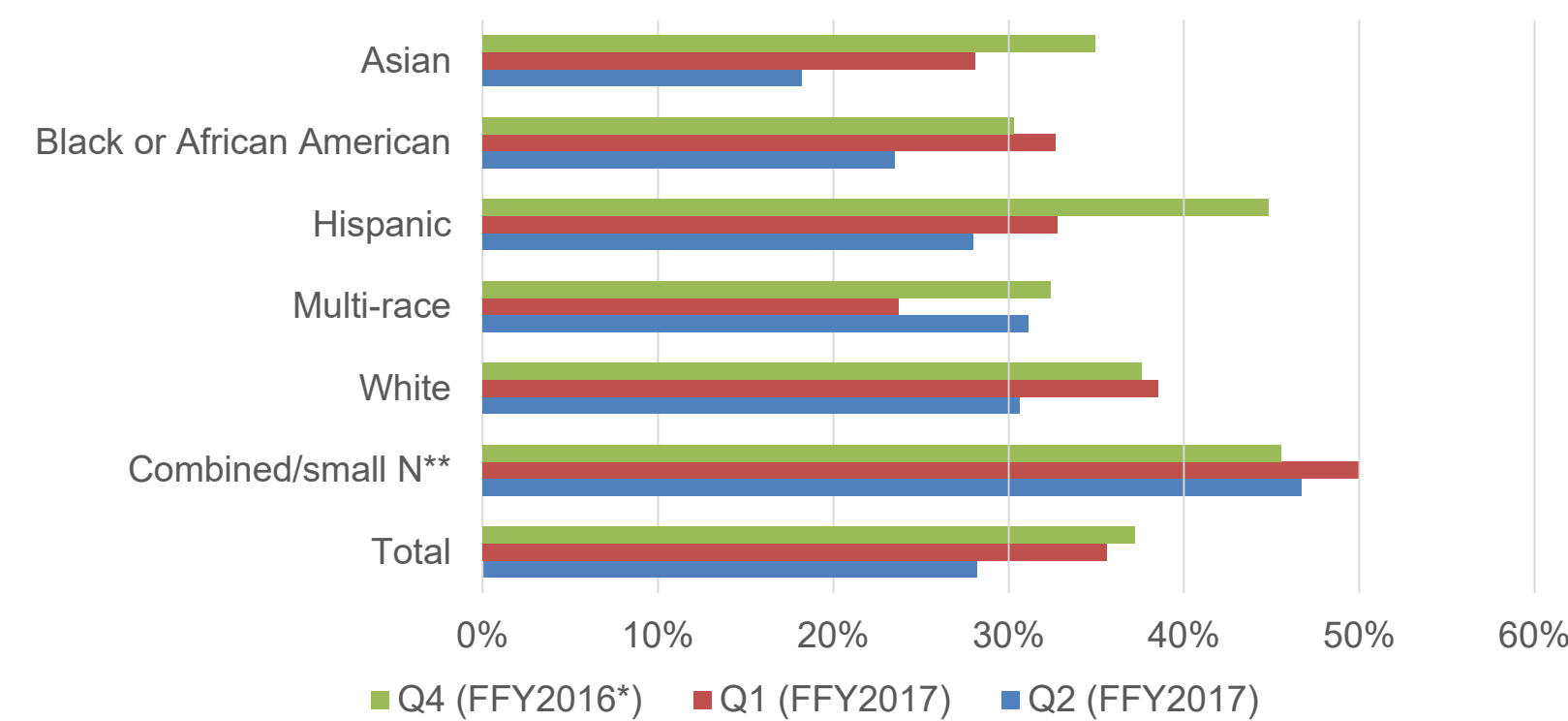
## Exploring and Using Data to Inform Decision-making: North Carolina's Family Outcomes Survey



North Carolina's Infant and Toddler Program convened stakeholders to discuss issues with Family Outcomes Survey data:

- \* Downward trends in response rate
- \* Less racial representativeness

Response Rates by Race/Ethnicity Over Time



\*Q4 of FFY 2016 was a pilot phase with nine Children's Developmental Services Agencies (CDSA) participating.  
\*\*Demographic groups with small numbers were combined to protect confidentiality. Many include American Indian/Alaska native, Hawaiian/Pacific Islander, and unknown/missing race/ethnicity.

Stakeholders identified challenges and improvement strategies based on a review of the survey data and the results of an evaluation of the process.

Challenges	Improvement Strategies
<b>Survey delivery</b> <ul style="list-style-type: none"> <li>Staff forgetting to bring/offer survey</li> <li>Not documenting survey delivery</li> </ul>	<ul style="list-style-type: none"> <li>Share strategies among local programs</li> <li>Additional training, webinars, written guidance</li> <li>More staff access to tablets &amp; laptops</li> </ul>
<b>Response options for families</b> <ul style="list-style-type: none"> <li>Limited access to tablets/laptops</li> <li>No Internet access</li> </ul>	<ul style="list-style-type: none"> <li>Omit TinyURL and access survey via program website</li> <li>Phone options for families (text, QR codes)</li> </ul>
<b>Explaining survey process to families</b> <ul style="list-style-type: none"> <li>Confidential vs. anonymous</li> <li>Completing survey with providers present</li> <li>Explaining that survey is optional</li> </ul>	<b>Additional resources for talking with families, such as:</b> <ul style="list-style-type: none"> <li>Scripts</li> <li>Video examples of talking with families</li> <li>Additional handouts for families</li> </ul>

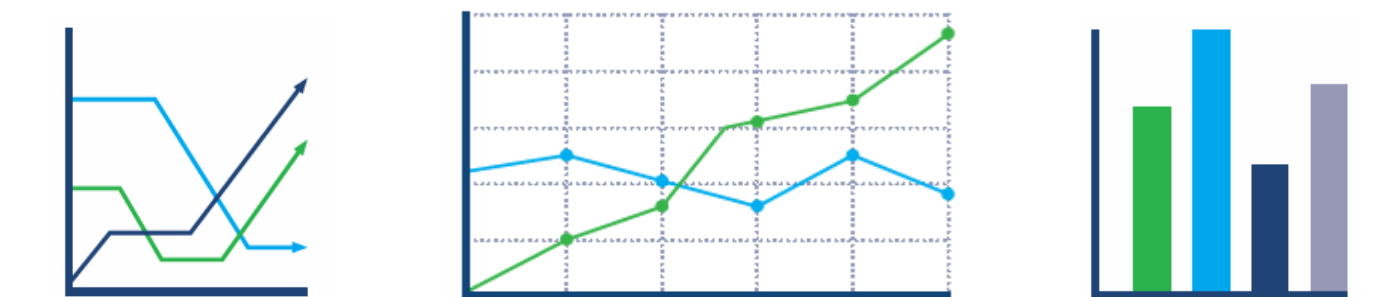
## Data Culture Toolkit

The DaSy Center's Data Culture Toolkit contains information, guidance, and templates to assist Part C and Part B 619 program staff with building effective data teams and supporting conditions for a culture of data use at the state and local levels. The toolkit is organized around key steps to building a culture of data use in your state or local team.



For more information, visit <https://dasycenter.org/data-culture-toolkit/>

## Preparing and Supporting Local Data Teams: Pennsylvania's Data Literacy Academy



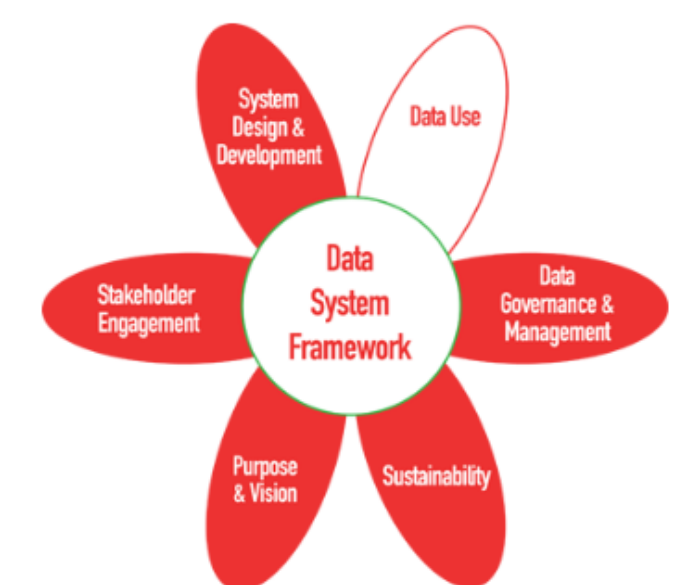
Pennsylvania held a 2-day Data Literacy Academy for local early intervention (EI; birth to 5) leaders to help them learn strategies for building a culture of data-informed inquiry in their programs. The goal was to support local leaders with moving past data collection to using data for program improvement.

A series of local learning community events followed, such as:

- \* **Data discussions** to focus on particular reports and resources
- \* **Individualized TA support** through implementation of Quality Enhancement Plans (QEPs)
- \* **Data cleanup and ongoing quality monitoring assistance** for programs with high rates of missing data and/or data errors
- \* **Data visualization webinar series** to show a variety of ways data can be displayed to explore answers to critical questions
- \* **Data resources** made available through monthly emails and the program's online portal

## Connections to the DaSy Center's Data System Framework

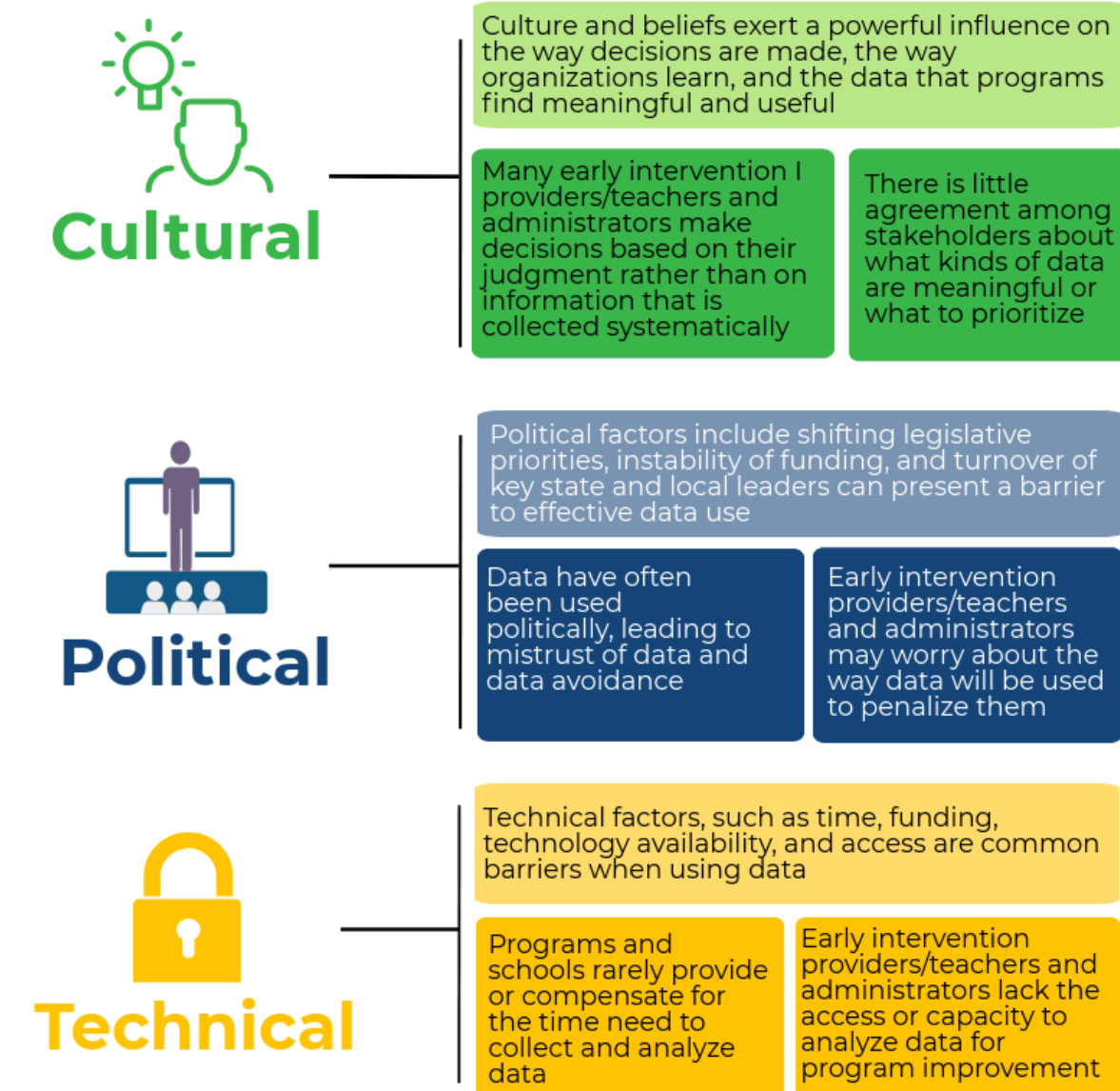
The Data Use subcomponent addresses the ongoing use of quality Part C and Section 619 data for program accountability, program improvement, and program operations at state and local levels.



Learn more at: <https://dasycenter.org/resources/dasy-framework/data-use/>

## Barriers to Data Use

Research has found three common areas that are barriers to data use.<sup>1</sup>



<sup>1</sup> Ingram, D. S. (2004). Accountability policies and teacher decision making: Barriers to the use of data to improve practice. Teachers College Record, 106(6), 1258–1287.

July 2018  
For more information visit [dasycenter.org](https://dasycenter.org)



## Guidelines for Building Great Data Teams



\*Early Intervention (EI) & Early Childhood Special Education (ECSE)

September 2017  
For more information visit [dasycenter.org](https://dasycenter.org)

